



GUESS THE STAT

What percentage of young women worry that they don't have the opportunity to progress at work?



EquiTea



**YOUNG
WOMEN'S
TRUST**

52%.

This stat is taken from Young
Women's Trust's 2024 Annual Survey



EquiTea





GUESS THE STAT

What percentage of young women said they'd faced discrimination at work or when looking for work?



EquiTea



**YOUNG
WOMEN'S
TRUST**

53%.

This stat is taken from Young
Women's Trust's 2024 Annual Survey



EquiTea





GUESS THE STAT

What percentage of young women said they have been paid less than the legal minimum wage?



EquiTea



**YOUNG
WOMEN'S
TRUST**

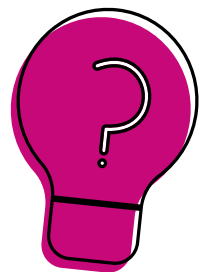
22%, more than 1/5th.

This stat is taken from Young
Women's Trust's 2024 Annual Survey



EquiTea





FUN

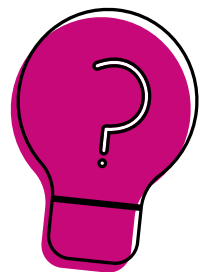
**If you could have an animal
sidekick, what would it be
and why?**



EquiTea



**YOUNG
WOMEN'S
TRUST**



FUN

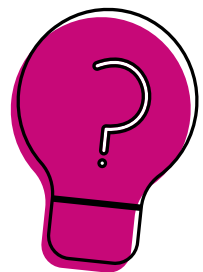
**What are your favourite
ways to relax?**



EquiTea



**YOUNG
WOMEN'S
TRUST**



FUN

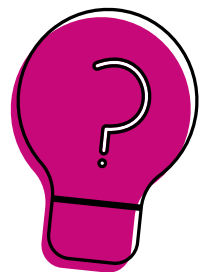
**What's something you've
learned about yourself in
the last 6 months?**



EquiTea



**YOUNG
WOMEN'S
TRUST**



FUN

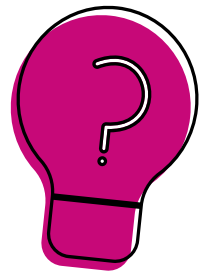
What makes a great office/workplace chat?



EquiTea



**YOUNG
WOMEN'S
TRUST**



FUN

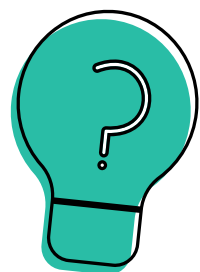
**Think of a famous woman
you really admire – what
about her appeals to you?**



EquiTea



**YOUNG
WOMEN'S
TRUST**



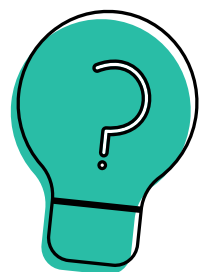
FOCUSED

**Who was a line manager
(or teacher for young staff)
who helped you, and what
made them great?**



EquiTea





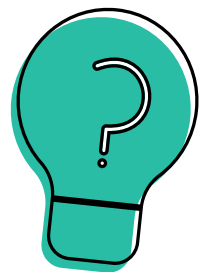
FOCUSED

What are the benefits for an organisation when they support their young women employees to feel safe and heard at work?



EquiTea





FOCUSED

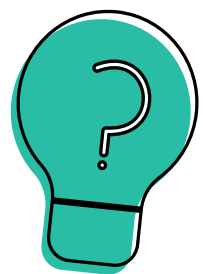
**What can staff from
different generations
learn from each other?**



EquiTea



**YOUNG
WOMEN'S
TRUST**



FOCUSED

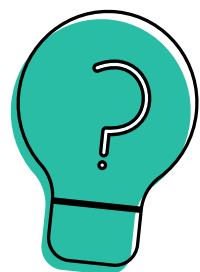
**What three qualities do you
most value in a colleague?**



EquiTea



**YOUNG
WOMEN'S
TRUST**



FOCUSED

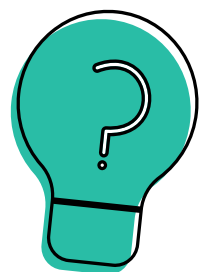
**What would a perfect
working day look like for
you, from start to finish?**



EquiTea



**YOUNG
WOMEN'S
TRUST**



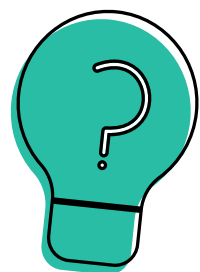
FOCUSED

How do you manage your work/life balance – have you learned any strategies you could share with the group?



EquiTea





FOCUSED

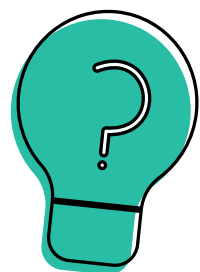
**How do you think
employers can best
support young women
at work?**



EquiTea



**YOUNG
WOMEN'S
TRUST**



FOCUSED

What piece of workplace advice would you give to your younger self?



EquiTea



**YOUNG
WOMEN'S
TRUST**